

2011



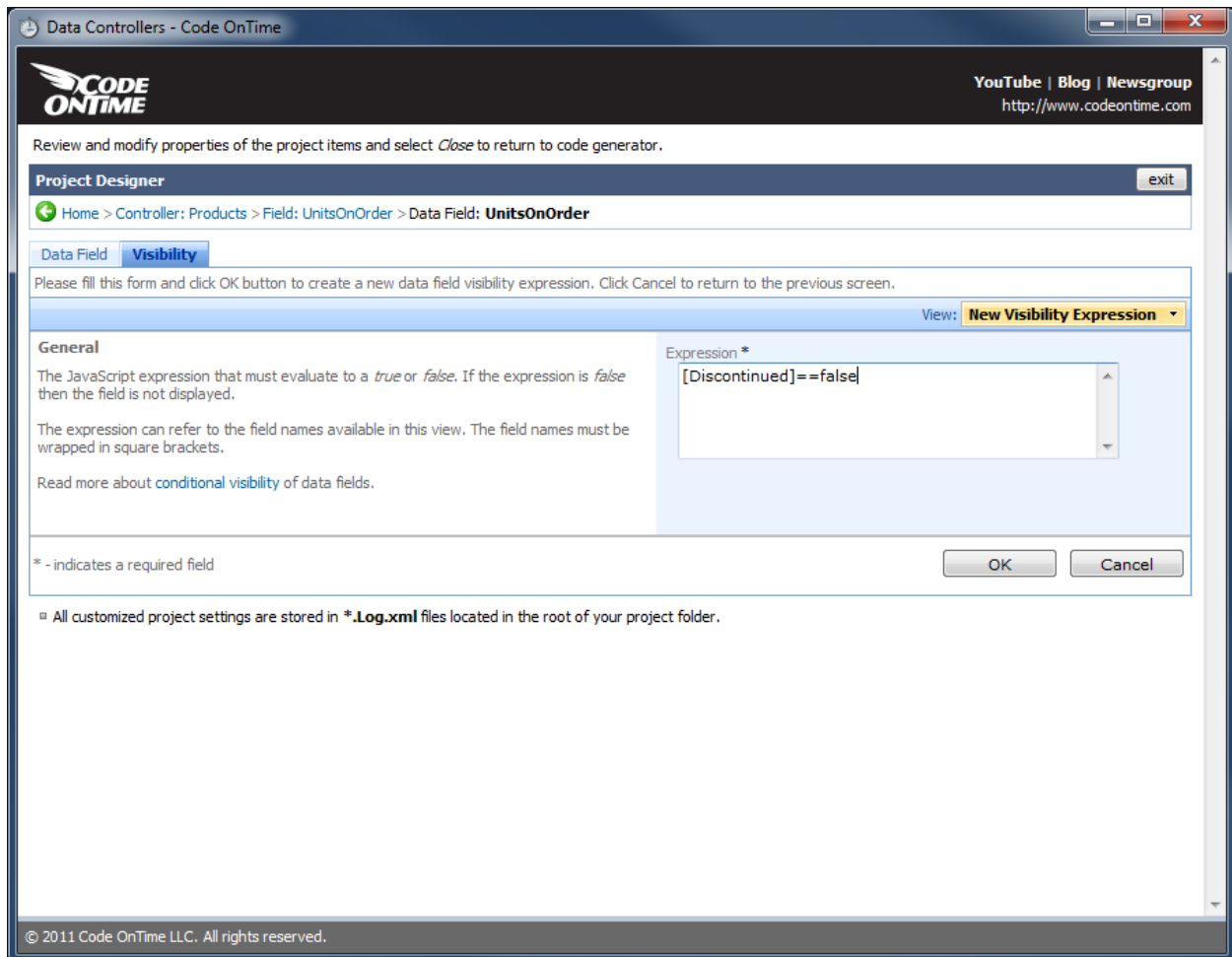
## **USER GUIDE**

Conditional Visibility of Fields and Categories

## Conditional Visibility of Fields

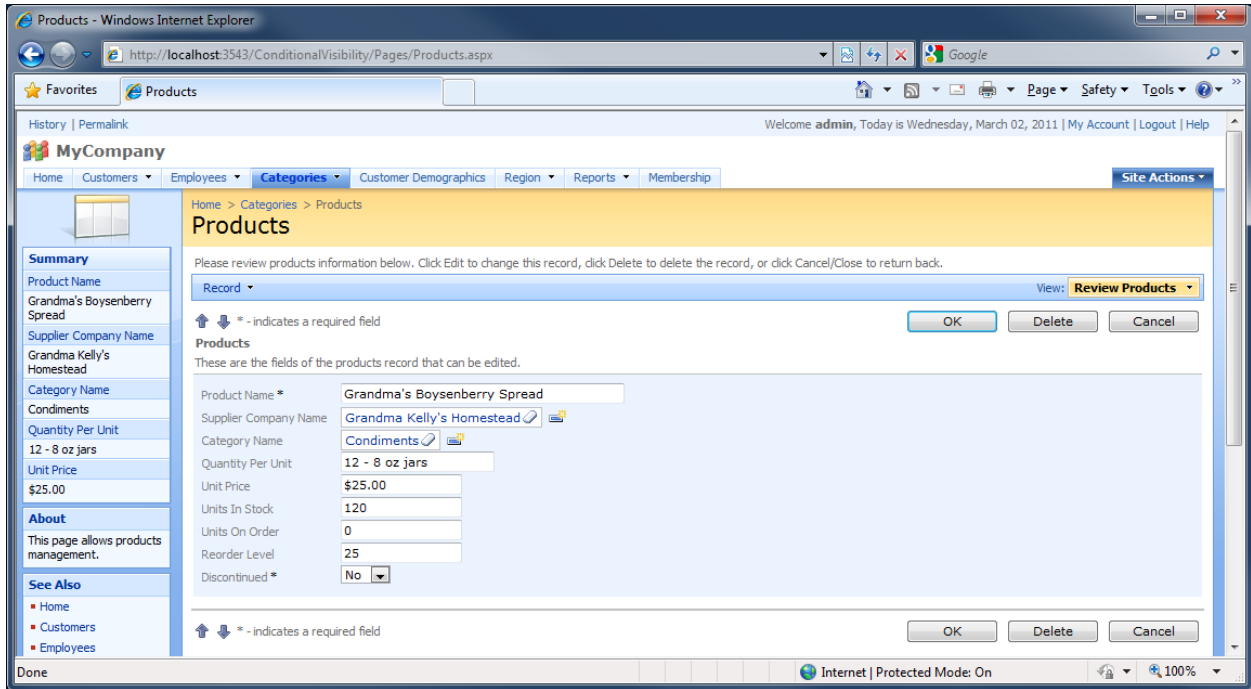
You can control the visibility of a data field based on a defined condition. Let's use the *Northwind* sample database as an example. In the *Products* page, there are the fields *Discontinued* and *Units On Order*. When *Discontinued* is equal to true, we would like the *Units On Order* field to not be displayed.

Run *Code On Time Generator*, select the project name you wish to edit, and press *Design*. Select the *Products* data controller, and switch to *Fields* tab. Select the *UnitsOnOrder* field and switch to *Data Fields*. Click on the data field that resides in the *Products* category and switch to *Visibility* tab. On the action bar, press *New / New Item*. In the *Expression* field, type "[Discontinued]==false". When the expression evaluates to a true, the field will be displayed. Otherwise, the field will not be displayed.

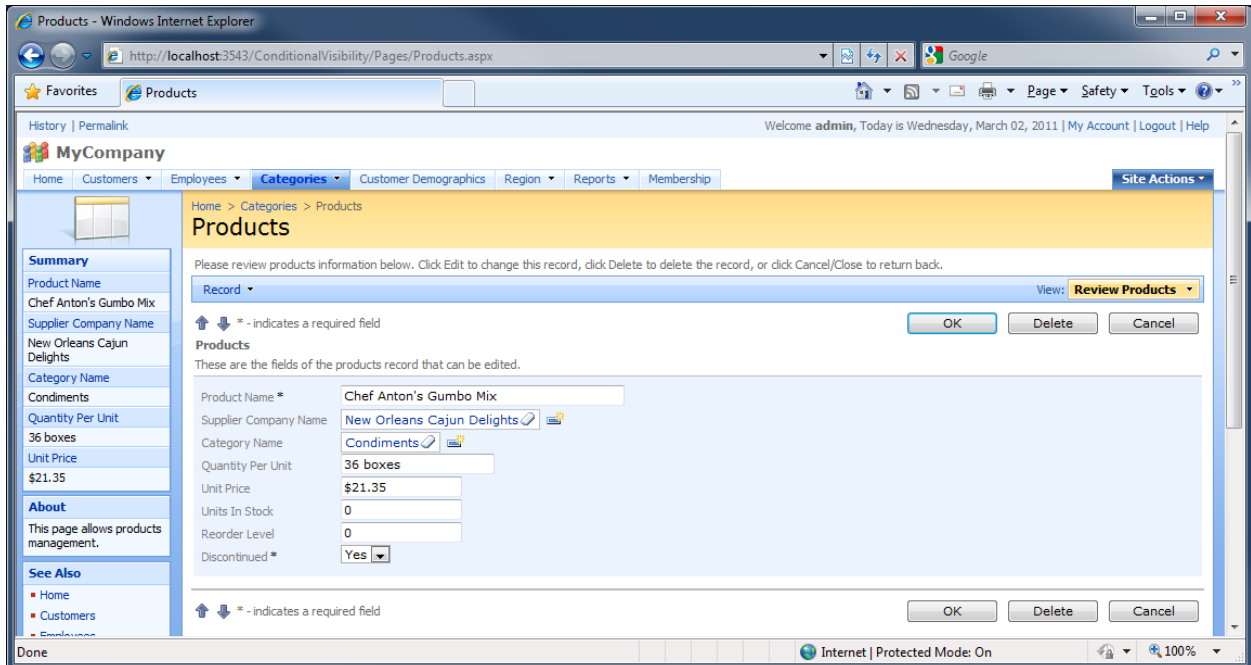


Save the visibility condition, close the designer, and generate the application. When the page loads, navigate to the *Products* page.

If you open the detail view of a record with *Discontinued* set to “No”, you will be able to view the *Units On Order* field.



If you view a field with a *Discontinued* of “Yes”, then the *Units On Order* field will not be displayed.



## Conditional Visibility of Categories

You can also specify the visibility of categories based on specific conditions. Create two categories for *Orders* detail view, *General* and *Shipping Info*, and populate them with data fields. The *General* category data field list should look like the image below.

The screenshot shows the Code OnTime Project Designer interface. The breadcrumb path is "Home > Controller: Orders > Category: General". The "Data Fields" tab is selected, displaying a table of data fields for the "General" category.

| Field Name   | Read Only | Cols | Rows | Data Type | Alias               | Hidden | Text Mode | Σ    | Chart |
|--------------|-----------|------|------|-----------|---------------------|--------|-----------|------|-------|
| CustomerID   | Default   | n/a  | n/a  | String    | CustomerCompanyName | No     | Text      | None | None  |
| EmployeeID   | Default   | n/a  | n/a  | Int32     | EmployeeLastName    | No     | Text      | None | None  |
| OrderDate    | Default   | 10   | n/a  | DateTime  | n/a                 | No     | Text      | None | None  |
| RequiredDate | Default   | 10   | n/a  | DateTime  | n/a                 | No     | Text      | None | None  |
| ShippedDate  | Default   | 10   | n/a  | DateTime  | n/a                 | No     | Text      | None | None  |
| ShipVia      | Default   | n/a  | n/a  | Int32     | ShipViaCompanyName  | No     | Text      | None | None  |

Showing 1-6 of 6 items | Refresh

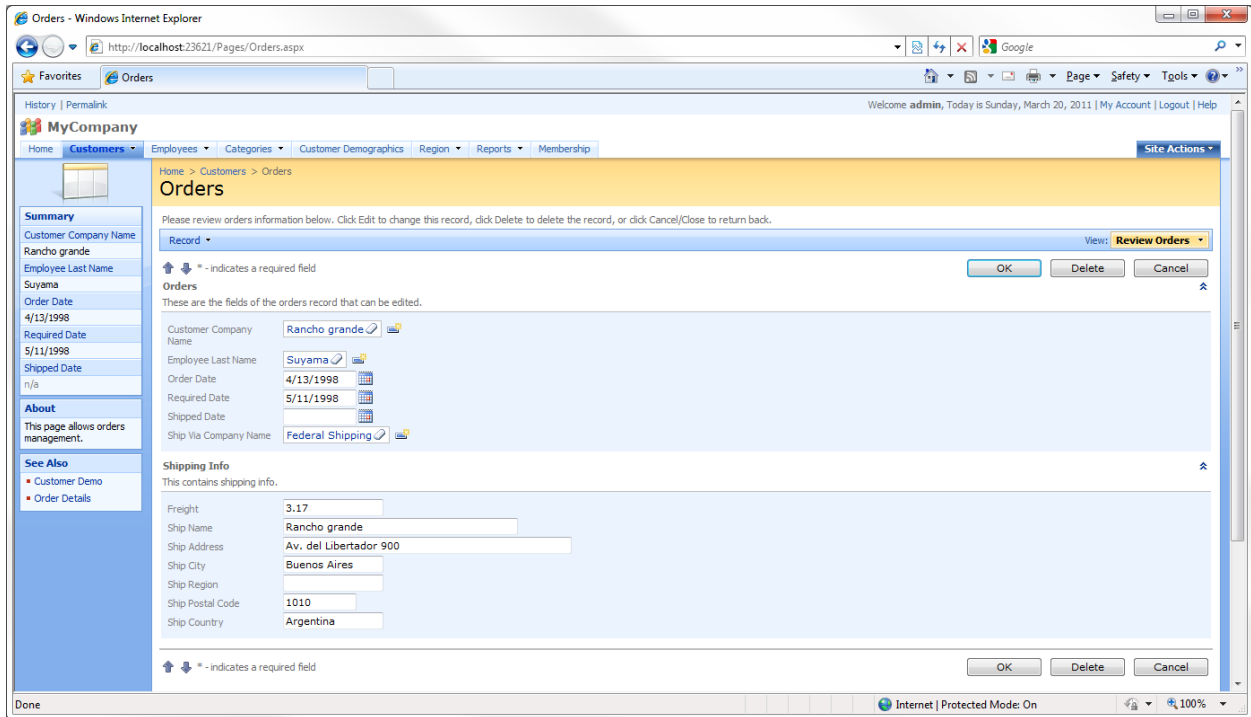
The data fields for *Ship Info* should look as below.

The screenshot shows the Code OnTime Project Designer interface. The breadcrumb path is "Home > Controller: Orders > Category: Shipping Info". The "Data Fields" tab is selected, displaying a table of data fields for the "Shipping Info" category.

| Field Name     | Read Only | Cols | Rows | Data Type | Alias | Hidden | Text Mode | Σ    | Chart |
|----------------|-----------|------|------|-----------|-------|--------|-----------|------|-------|
| Freight        | Default   | 15   | n/a  | Decimal   | n/a   | No     | Text      | None | None  |
| ShipName       | Default   | 40   | n/a  | String    | n/a   | No     | Text      | None | None  |
| ShipAddress    | Default   | n/a  | n/a  | String    | n/a   | No     | Text      | None | None  |
| ShipCity       | Default   | 15   | n/a  | String    | n/a   | No     | Text      | None | None  |
| ShipRegion     | Default   | 15   | n/a  | String    | n/a   | No     | Text      | None | None  |
| ShipPostalCode | Default   | 10   | n/a  | String    | n/a   | No     | Text      | None | None  |
| ShipCountry    | Default   | 15   | n/a  | String    | n/a   | No     | Text      | None | None  |

Showing 1-7 of 7 items | Refresh

Now, switch to the *Visibility* tab of the *Shipping Info* category. Create a new visibility condition by pressing *New | New Item*. We will want to hide the *Shipping Info* category when *Shipped Date* has a value. Otherwise, the category will be displayed. To implement this, type "[ShippedDate]==null". Save and generate the application. When you select an order, you will see the conditional visibility at work. An order without a *Shipped Date* displays the *Shipping Info*.



An order with a *Shipped Date* does not display the *Shipping Info*.

