

2011



USER GUIDE

Installing SharePoint Foundation 2010

SharePoint 2010

Microsoft SharePoint is a web application platform designed to fulfill common enterprise web requirements. The core infrastructure is suited to providing a base technology platform for other applications, such as *Code On Time* web apps. There are three primary flavors of *SharePoint*, but we'll be focusing on *SharePoint Foundation 2010*. This is a free version designed for small businesses and development. Before you can start developing with *SharePoint*, it's highly suggested to have a development instance on your computer. While *Microsoft* provides [their own article](#) for *SharePoint Foundation* installation, we created this article in order to condense the information for your convenience. This article will go through the steps necessary to install *SharePoint 2010*, provided that you are using *Windows Server 2008 SP2 x64*, *Windows Server R2 x64*, or *Windows Vista/7 x64*.

Prerequisites

- Make sure that you have installed all the latest updates for your operating system using *Windows Update*.
- For *Windows 7*, install the following:
 - [WCF Hotfix](#)
 - [ADO.NET Data Services Update](#)
 - [Microsoft Sync Framework](#)
 - [SQL Server Native Client](#)
 - [Windows Identity Foundation](#)
- For *Vista SP1* or *SP2*, install the following:
 - [WCF Hotfix](#)
 - [IIS 7.0 hotfix](#)
 - [ADO.NET Data Services Update](#)
 - [.NET Framework 3.5 SP1](#)
 - [Windows PowerShell 2.0](#)
 - [Windows Installer 4.5 Redistributable](#)
 - [Microsoft Sync Framework](#)
 - [SQL Server Native Client](#)
 - [Windows Identity Foundation](#)
- For *Server 2008 SP2*, install the following:
 - [WCF Hotfix](#)
 - [ADO.NET Data Services Update](#)
- For *Server 2008 R2*, install the following:
 - [WCF Hotfix](#)
 - [ADO.NET Data Services Update](#)

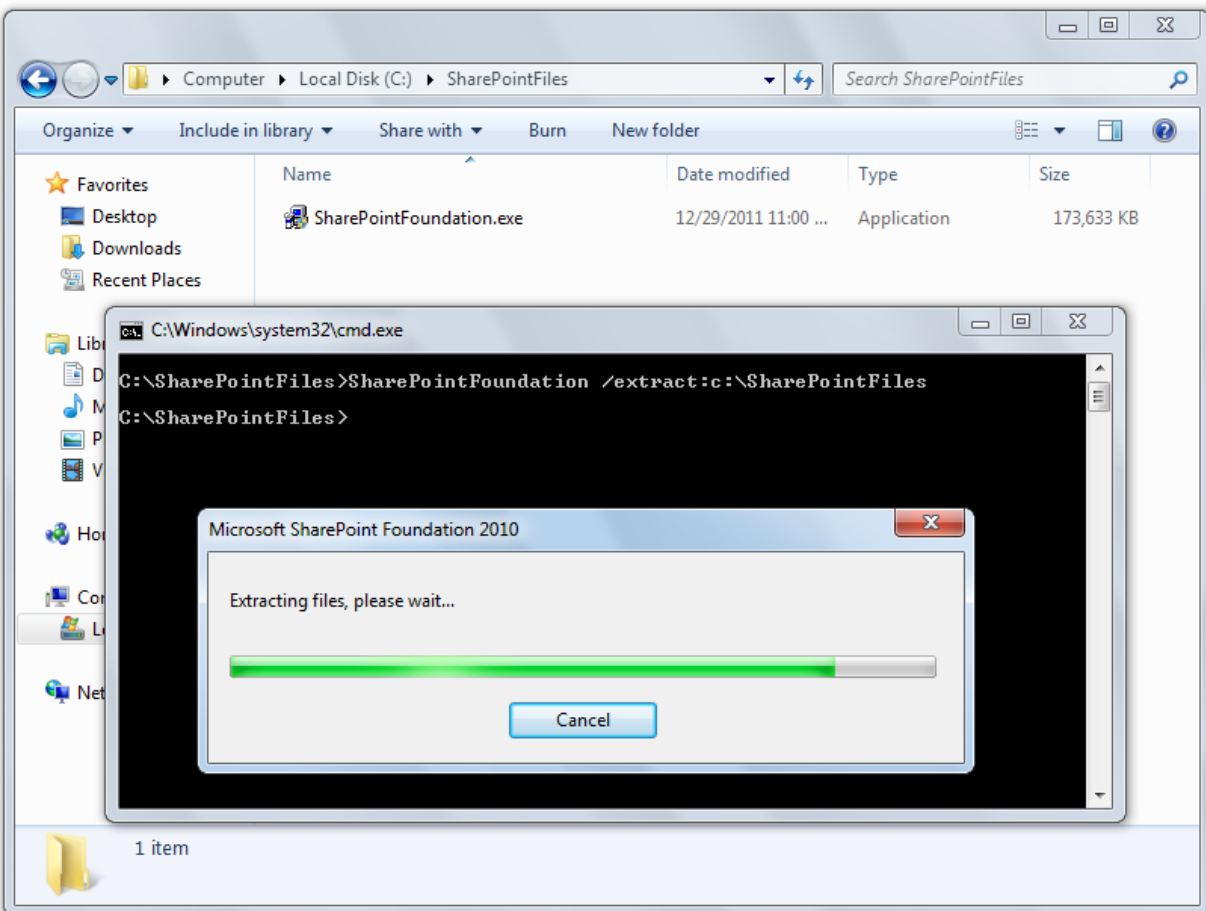
Setting Up Your Workstation for Installation

First, you will need to download [Microsoft SharePoint Foundation 2010](#). Save the file in the following path:

```
C:\SharePointFiles
```

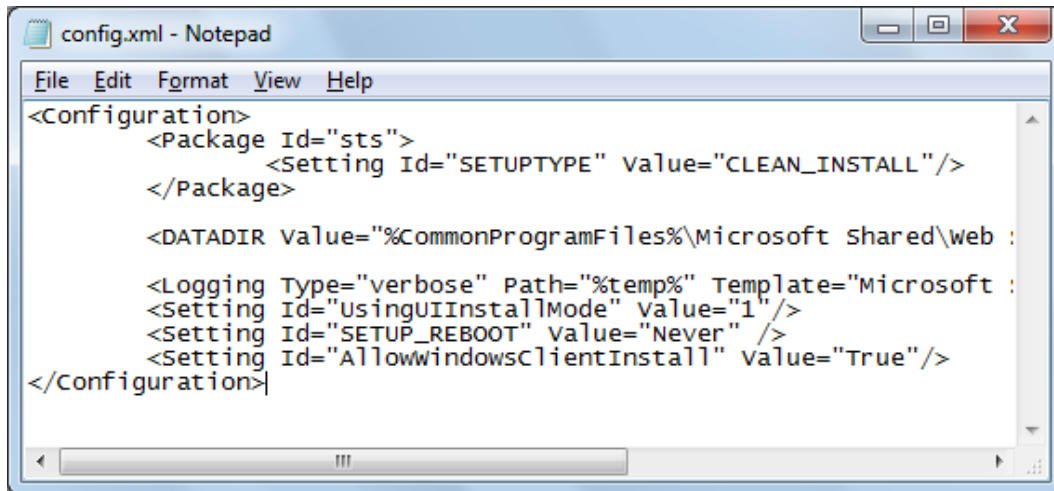
Hold *Shift* and right click on empty space in the folder. Select *Open command window here*. In the command window, type

```
SharePointFoundation /extract:c:\SharePointFiles
```



Wait until the extraction is complete, and then navigate to `C:\SharePointFiles\files\Setup\config.xml` and open the file in *Notepad*. Add the following line in the configuration tag, as shown in the picture on the next page.

```
<Setting Id="AllowWindowsClientInstall" Value="True"/>
```



```
config.xml - Notepad
File Edit Format View Help
<Configuration>
  <Package Id="sts">
    <Setting Id="SETUPTYPE" value="CLEAN_INSTALL"/>
  </Package>

  <DATADIR value="%CommonProgramFiles%\Microsoft Shared\web :
  <Logging Type="verbose" Path="%temp%" Template="Microsoft :
  <Setting Id="UsingUIInstallMode" value="1"/>
  <Setting Id="SETUP_REBOOT" value="Never" />
  <Setting Id="AllowWindowsClientInstall" value="True"/>
</Configuration>
```

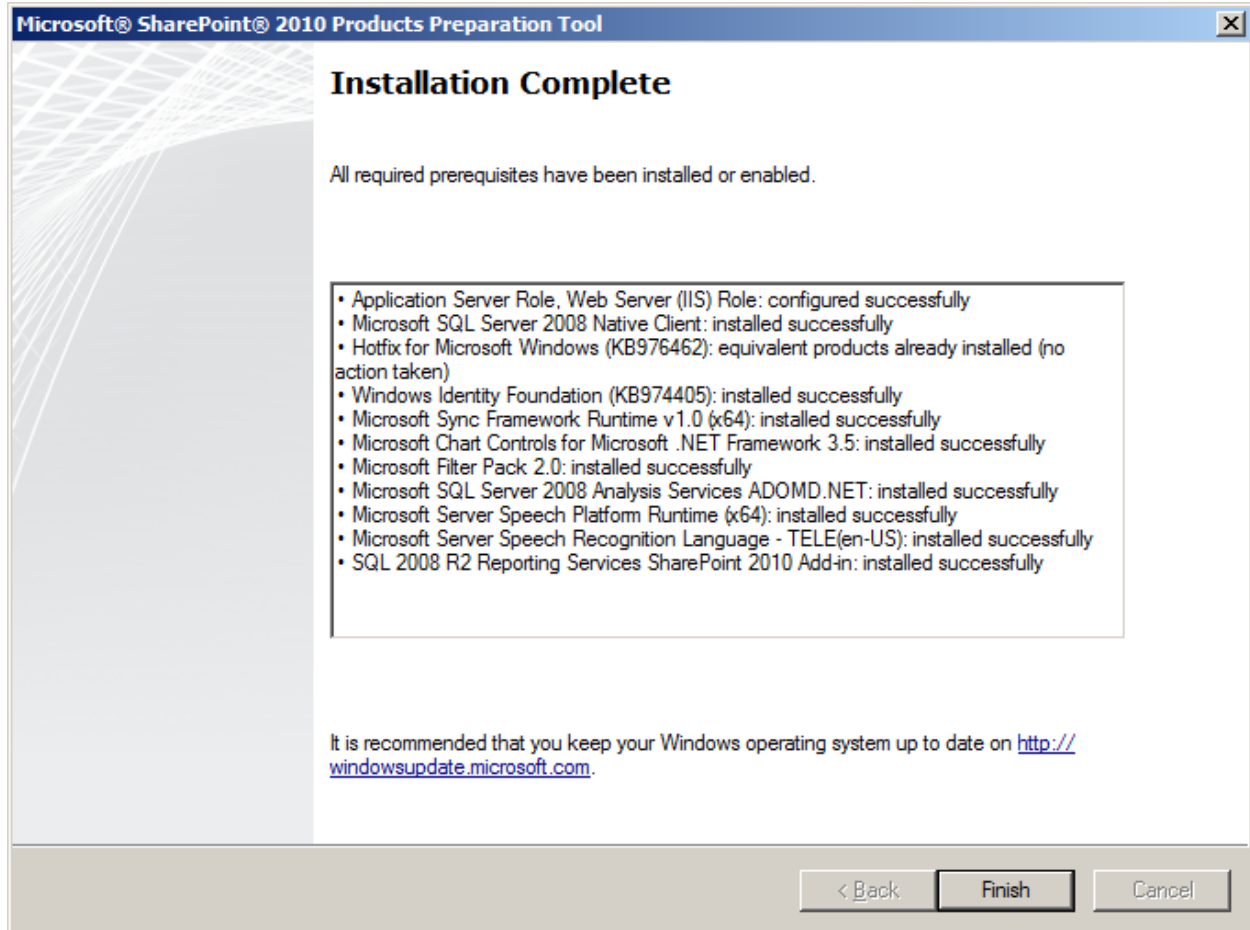
Save the configuration file and close *Notepad*.

Several *Windows Features* need to be activated for *SharePoint*. Enter the following command in the *Command Prompt* window and wait for it to be completed.

```
start /w pkgmgr /iu:IIS-WebServerRole;IIS-WebServer;IIS-
CommonHttpFeatures;^IIS-StaticContent;IIS-DefaultDocument;IIS-
DirectoryBrowsing;IIS-HttpErrors;^IIS-ApplicationDevelopment;IIS-ASPNET;IIS-
NetFxExtensibility;^IIS-ISAPIExtensions;IIS-ISAPIFilter;IIS-
HealthAndDiagnostics;^IIS-HttpLogging;IIS-LoggingLibraries;IIS-
RequestMonitor;IIS-HttpTracing;IIS-CustomLogging;IIS-
ManagementScriptingTools;^IIS-Security;IIS-BasicAuthentication;IIS-
WindowsAuthentication;IIS-DigestAuthentication;^IIS-RequestFiltering;IIS-
Performance;IIS-HttpCompressionStatic;IIS-HttpCompressionDynamic;^IIS-
WebServerManagementTools;IIS-ManagementConsole;IIS-
IIS6ManagementCompatibility;^IIS-Metabase;IIS-WMICompatibility;WAS-
WindowsActivationService;WAS-ProcessModel;^WAS-NetFxEnvironment;WAS-
ConfigurationAPI;WCF-HTTP-Activation;^WCF-NonHTTP-Activation
```

Server 2008 Prerequisite Installation

For *Server 2008 R2* and *SP2*, you can use the *Products Preparation Tool* to install all the prerequisites. This file is found in *C:\SharePointFiles\PrerequisiteInstaller.exe*. Run the program and allow it to install all the prerequisites. Once complete, skip to the *SharePoint Installation* chapter in this article.

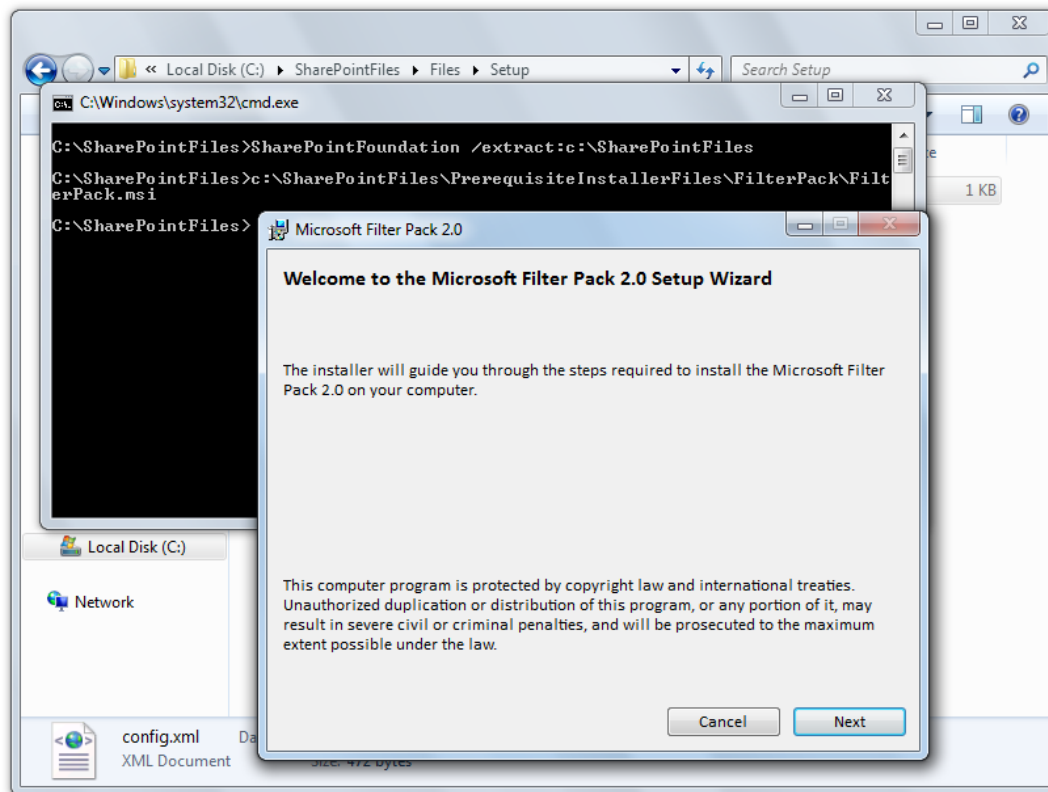


Windows Vista/7 Prerequisite Installation

If you're running *Windows Vista* or *7*, you will now need to install manually, starting with *Microsoft FilterPack 2.0*. This can be done by going back to command prompt and entering the following:

```
c:\SharePointFiles\PrerequisiteInstallerFiles\FilterPack\FilterPack.msi
```

The *Setup Wizard* will open.



Press *Next*, accept the license agreement, and wait until installation finishes.

Installing SharePoint 2010

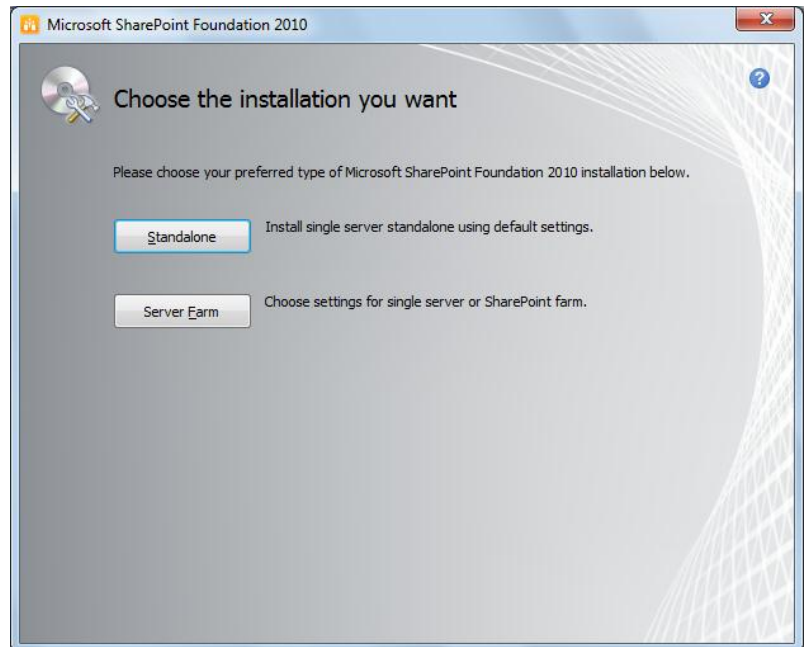
Now that your workstation is ready to install, go to your command prompt and enter the following command:

```
c:\SharePointFiles\Setup.exe
```

Accept the license agreement, and select *Standalone* installation.

When it finishes, do not click continue. If you are not using a remote instance of *SQL Server 2008*, you will need to install [SQL Server 2008 KB 970315 x64](#) first.

Once completed, check the box to run the *SharePoint Products Configuration Wizard*.



When the update is finished, proceed through the *SharePoint Products Configuration Wizard*. It may take a while to finish this step.

Once complete, press *Finish* and your new *SharePoint* instance will load in a browser window and is ready for use.

