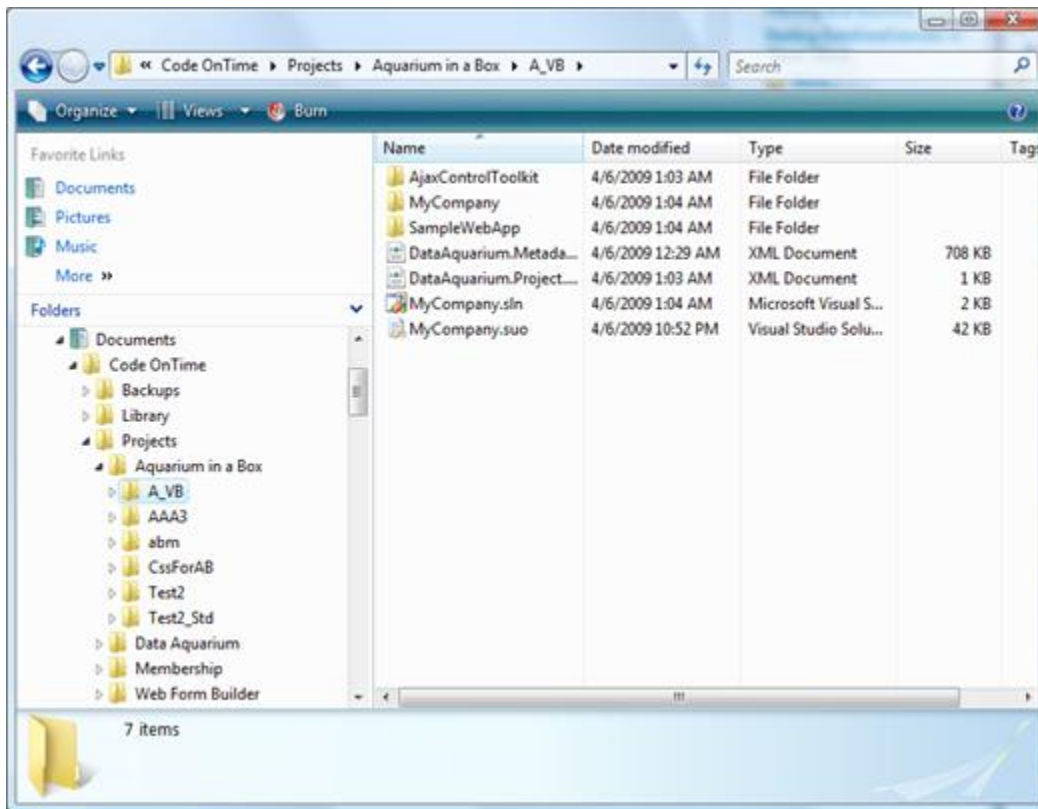




Creating Projects Outside “My Documents”

Code OnTime Generator will automatically generate projects to *My Documents* folder. You will find your projects code broken down by project type name under root *[My Documents]\Code OnTime*.



This might introduce a problem with running your code under *ASP.NET Development Server* if your network policy has mapped this folder to a network drive.

Code OnTime Generator is built as an open code generation platform and allows free alterations to the code generation script.

For example, you can redirect the project output folder for *Data Aquarium* projects to you local folder *C:\Data\MyProjects* by modifying *[My Documents]\Code OnTime\Projects\Data Aquarium\CodeOnTime.Projects.xml* code generation script.

You can download the code generator script for *Data Aquarium* premium project at <http://dev.codeontime.com/CodeOnTime.Project.zip>. This script is current as of the date of publication of this article.

Open *[My Documents]\Code OnTime\Projects\Data Aquarium\CodeOnTime.Projects.xml* in your favorite XML editor and scroll all the way to the bottom.

```
.....
<load path="DataAquarium.Project.xml">
  <if test="a:project/a:webServer/@run='true'">
    <execute fileName="$CommonProgramFiles\microsoft
shared\DevServer\9.0\WebDev.WebServer.EXE"
arguments="/port:{a:project/a:webServer/@port} /path:&quot;$ProjectPath&quot;
/vpath:&quot;/$ProjectName&quot;" mode="nowait"/>
    <execute
fileName="http://localhost:{a:project/a:webServer/@port}/$ProjectName/default
.aspx" arguments="-new" mode="nowait"/>
  </if>
</load>
</build>
<actions>
  <action name="browse" tooltip="View &quot;{0}&quot; in a web
browser.">
    <load path="DataAquarium.Project.xml">
      <execute fileName="$CommonProgramFiles\microsoft
shared\DevServer\9.0\WebDev.WebServer.EXE"
arguments="/port:{a:project/a:webServer/@port} /path:&quot;$ProjectPath&quot;
/vpath:&quot;/$ProjectName&quot;" mode="nowait"/>
      <execute
fileName="http://localhost:{a:project/a:webServer/@port}/$ProjectName/default
.aspx" arguments="-new" mode="nowait"/>
    </load>
  </action>
```

```
</actions>
</project>
```

Replace this code with the following:

```
<load path="$ProjectPath">
  <variable name="MyProjectPath" select="'C:\data\MyProjects'"/>
  <forEach select="//file">
    <copy input="$ProjectPath\{@path}"
output="$MyProjectPath\{@path}"/>
  </forEach>
</load>
<load path="DataAquarium.Project.xml">
  <if test="a:project/a:webServer/@run='true'">
    <execute fileName="$CommonProgramFiles\microsoft
shared\DevServer\9.0\WebDev.WebServer.EXE"
arguments="/port:{a:project/a:webServer/@port}
/path:&quot;,$MyProjectPath&quot;; /vpath:&quot;,$ProjectName&quot;;"
mode="nowait"/>
    <execute
fileName="http://localhost:{a:project/a:webServer/@port}/$ProjectName/default
.aspx" arguments="-new" mode="nowait"/>
  </if>
</load>
</build>
<actions>
  <action name="browse" tooltip="View &quot;{0}&quot; in a web browser.">
    <load path="DataAquarium.Project.xml">
      <variable name="MyProjectPath" select="'C:\data\MyProjects'"/>
      <execute fileName="$CommonProgramFiles\microsoft
shared\DevServer\9.0\WebDev.WebServer.EXE"
arguments="/port:{a:project/a:webServer/@port}
/path:&quot;,$MyProjectPath&quot;; /vpath:&quot;,$ProjectName&quot;;"
mode="nowait"/>
```

```
        <execute
fileName="http://localhost:{a:project/a:webServer/@port}/$ProjectName/default
.aspx" arguments="-new" mode="nowait"/>
        </load>
    </action>
</actions>
```

The script is introducing a new variable `$MyProjectPath`, which is set to `c:\data\MyProjects`.

The variable is used to copy the generated code from *[My Documents]* location to the one specified by the variable and then *ASP.NET Development Server* is directed to use this location when executing the project.

Code OnTime LLC

<http://www.codeontime.com>