



## Starting DataViewExtender in "New" Mode

The latest update to [Data Aquarium Framework](#) introduces two new properties, *StartCommandName* and *StartCommandArgument*. You can use these properties to start a *DataViewExtender* instance in the desired mode by forcing it to execute a command just before the view is rendered in a web browser.

### QUICK SAMPLE

Create a new page `~/NewProduct.aspx` in a project generated with our [ASP.NET Code Generator](#).

```
<%@ Page Title="" Language="C#" MasterPageFile="~/MasterPage.master"
    AutoEventWireup="true" CodeFile="NewProduct.aspx.cs"
    Inherits="NewProduct" %>

<asp:Content ID="Content1" ContentPlaceHolderID="head" runat="Server">
</asp:Content>
<asp:Content ID="Content2" ContentPlaceHolderID="Header1Placeholder"
runat="Server">
    New Product
</asp:Content>
<asp:Content ID="Content3" ContentPlaceHolderID="Header2Placeholder"
runat="Server">
    Northwind
</asp:Content>
<asp:Content ID="Content4" ContentPlaceHolderID="BodyPlaceholder"
runat="Server">
    <div id="Products" runat="server" />
    <aquarium:DataViewExtender ID="ProductsExtender" runat="server"
        TargetControlID="Products"
```

```

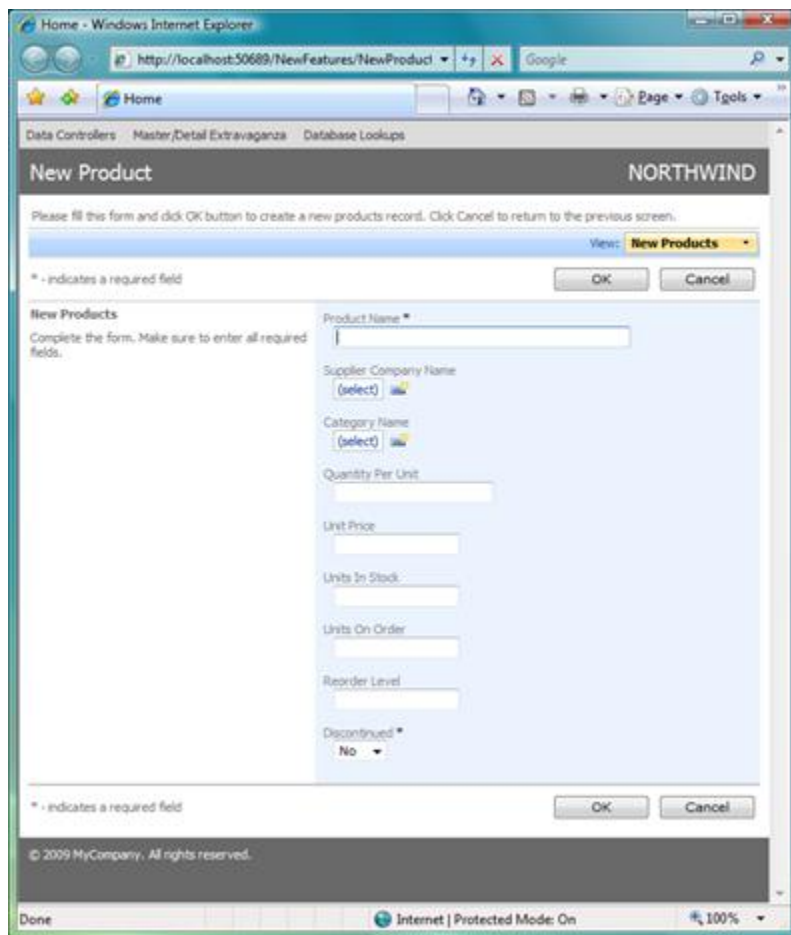
Controller="Products" View="createForm1"

StartCommandName="New" StartCommandArgument="createForm1" />
</asp:Content>

```

If you were to omit two last attributes in *DataViewExtender* markup then a read-only view of the first record of your data controller command is displayed. The framework treats all views the same way - there is no magic in "createForm1" name. The client engine will simply select the first record and present it in a specified view.

A client-side command "New" must be executed to force a display of a new record in *createForm1*. New properties will do the trick.



## CLIENT-SIDE STATE MACHINE

Another great feature available to developers is the client-side action state machine.

Run sample described above and then create a new record. As soon as a record is inserted you will be redirected to the "grid" view of all products. The same happens if you press *Cancel* button.

Suppose you want to use *Cancel* button to simply reset the form to the original "new" state. Also you want to rename button *OK* to *Save* and have it display a newly inserted record in "preview" mode that will lead to some fictitious step 2. A new button *Save and New* will create a new record and switch to the "new" mode right after a new record is created.

Open ~/Controllers/Products.aspx and change action group with scope "Form" as shown below.

```
<actionGroup scope="Form">
    <!-- modified actions -->
    <action whenLastCommandName="Select" whenLastCommandArgument="editForm1"
        commandName="Edit" />
    <action whenLastCommandName="Select" whenLastCommandArgument="editForm1"
        commandName="Delete" confirmation="Delete?" />
    <action whenLastCommandName="Select" whenLastCommandArgument="editForm1"
        commandName="Cancel" headerText="Close" />
    <!-- no changes -->
    <action whenLastCommandName="Edit" commandName="Update" headerText="OK"
/>
    <action whenLastCommandName="Edit" commandName="Delete"
confirmation="Delete?" />
    <action whenLastCommandName="Edit" commandName="Cancel" />
    <!-- modified actions -->
    <action whenLastCommandName="New" commandName="Insert"
commandArgument="ShowProduct"
        headerText="Save" />
    <action whenLastCommandName="New" commandName="Insert"
commandArgument="SaveAndNew"
        headerText="Save and New"/>
```

```

        <action whenLastCommandName="New" commandName="New"
commandArgument="createForm1"
            headerText="Cancel" confirmation="Do you want to reset this
form?"/>
        <action whenLastCommandName="Insert"
whenLastCommandArgument="ShowProduct"
            commandName="Select" commandArgument="createForm1"/>
        <action whenLastCommandName="Insert" whenLastCommandArgument="SaveAndNew"
            commandName="New" commandArgument="createForm1"/>
        <action whenLastCommandName="Select"
whenLastCommandArgument="createForm1"
            commandName="Navigate"
commandArgument="~/Default.aspx?ProductID={ProductID}"
            headerText="Continue to Step 2"/>
        <action whenLastCommandName="Select"
whenLastCommandArgument="createForm1"
            commandName="Cancel"/>
</actionGroup>

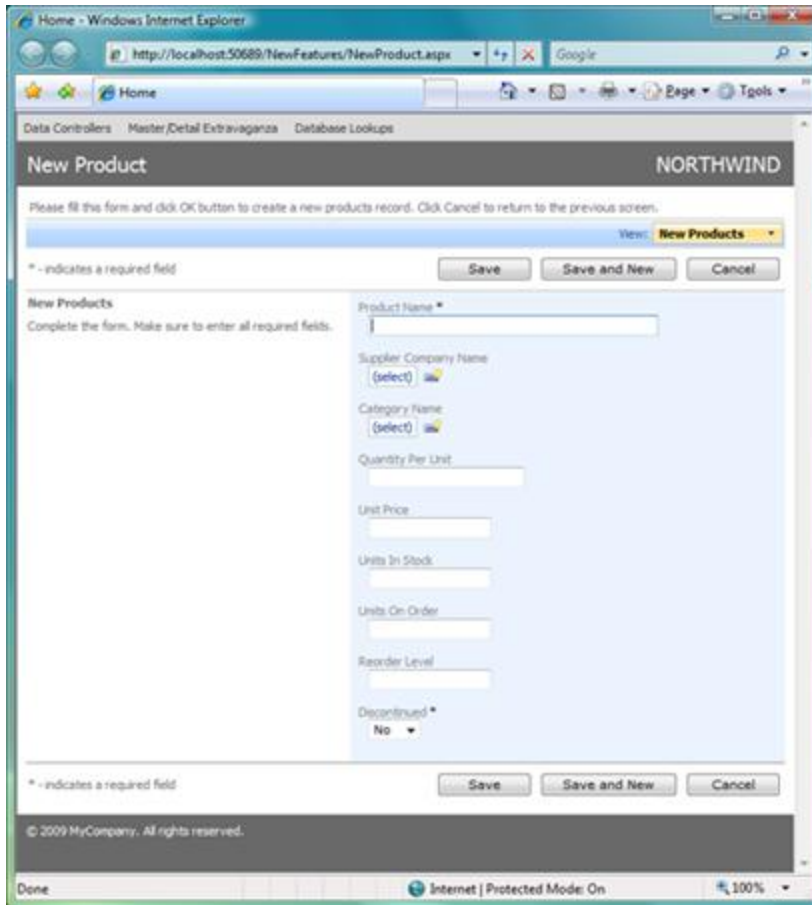
```

You probably noticed that new attribute *whenLastCommandArgument* is used to filter actions and complements attribute *whenLastCommandName*.

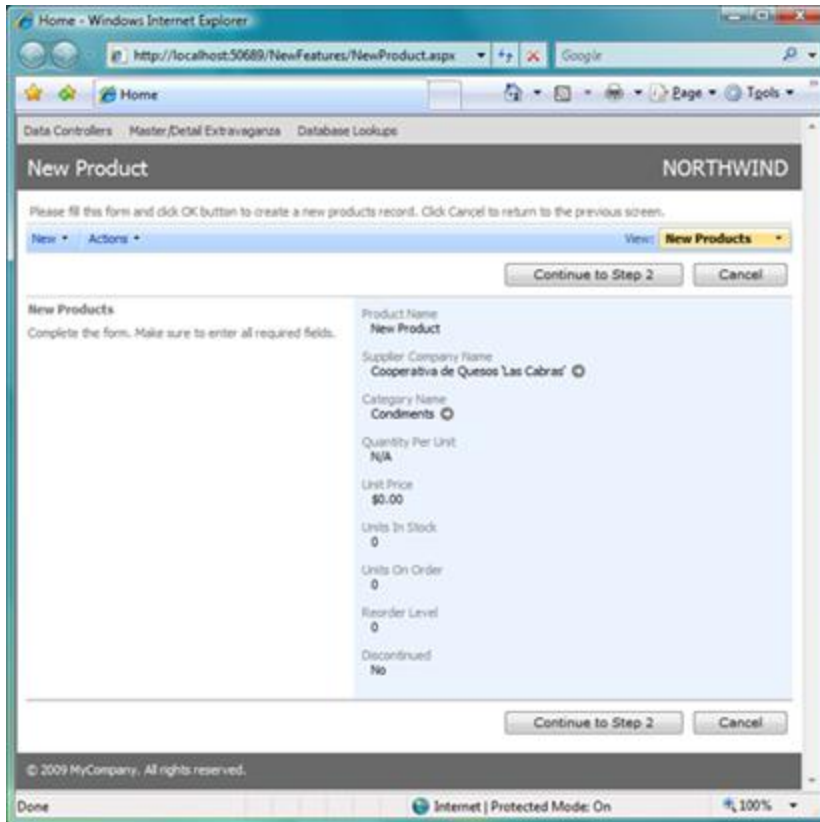
Action *Insert* creates a new record and in a case of success will try to select an action that is matched to the last command and argument. Pairs command/argument with values *Insert/ShowProduct* and *Insert/SaveAndNew* will trigger automatic execution of commands *Select/createForm1* and *New/createForm1*.

Server-side actions *Insert*, *Update*, *Delete*, and any custom actions are forcing the state machine to execute if command has been successfully completed and server code did not request redirect or client script execution.

Here is how the screen looks when you refresh *~/NewProduct.aspx*.



Enter details of a new product and click *Save* button. Product review form is presented.



If you click on *Continue to Step 2* then you will be redirected to a URL that looks similar to the one below:

<http://localhost:50689/NewFeatures/Default.aspx?ProductID=140>

## HIDING VIEW SELECTOR

The "orange" view selector at the top may spoil your view workflow ideas. Modify the content *Content1* as shown below:

```
<asp:Content ID="Content1" ContentPlaceHolderID="head" runat="Server">
<style type="text/css">
    table.ViewSelector {
        display:none;
    }
</style>
```


The view selector will be hidden from users.


Please fill this form and click OK button to create a new products record. Click Cancel to return to the previous screen.

\* - indicates a required field

**New Products**  
Complete the form. Make sure to enter all required fields.

Product Name \*

Supplier Company Name  
 

Category Name  
 

Code OnTime LLC

<http://www.codeontime.com>